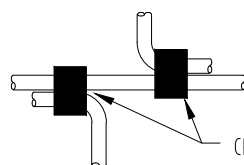
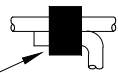
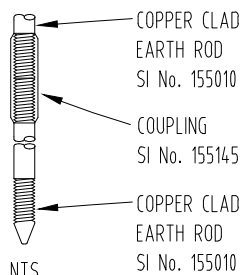


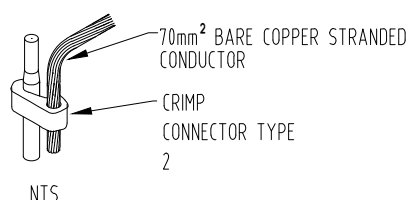
EARTH GRID PLAN

EARTH MAT  
CROSS JOIN  
(CRIMPED) NTSCRIMP CONNECTORS  
TYPE 1EARTH MAT  
TEE JOINT  
(CRIMPED) NTSCRIMP TYPE 1 SI  
No. 155136 NTSCRIMP TYPE 2 SI  
No. 155134 NTS

SI No. 141371

120mm<sup>2</sup> INSULATED G/Y  
HD STRANDED  
CONDUCTOREARTH TAIL  
NTS

NTS

COPPER CLAD  
EARTH ROD  
SI No. 155010  
COUPLING  
SI No. 155145  
COPPER CLAD  
EARTH ROD  
SI No. 155010

NTS

70mm<sup>2</sup> BARE COPPER STRANDED  
CONDUCTORCRIMP  
CONNECTOR TYPE  
2

## LEGEND:

- EARTH WIRE
- CRIMP JOINTS
- ⊗ ELECTRODE 3.6 m (MINIMUM)
- ↪ EARTH TAIL

## NOTES:

- DESIGNED TO SUIT TYREE1500/2000kVA OR SCHNEIDER 4/15 KIOSK SUBSTATIONS.
- STANDARD DESIGN ONLY TO BE USED WHERE SITE CONDITIONS ALLOW. REFER KIOSK DESIGN STANDARD, SECTION 2 FOR SUITABILITY.
- DEPTH OF EARTH MAT MUST NOT BE LESS THAN 500 mm BELOW FINISHED SUBSTATION GROUND LEVEL.
- WHERE COPPER CLAD EARTH RODS ARE USED TO THEY MUST NOT BE BENT OVER TO REMOVE "EXCESS" BELOW THE SURFACE. EXCESS MUST BE CUT OFF.
- EARTHING TO BE RUN AS FAR AS POSSIBLE IN ONE CONTINUOUS LENGTH WITH NO SHARP BENDS.
- ALL CONNECTIONS ON EARTH GRID TO BE CRIMPED WITH APPROVED CRIMPS.
- EARTH GRID 70 mm<sup>2</sup> Cu CONDUCTOR.
- EARTH GRID CONNECTIONS 120 mm<sup>2</sup> Cu CONDUCTOR.
- FOR PLINTH DETAIL REFER TO KS-304
- FOR CONDUIT DETAILS REFER TO KS-315
- FOR CIVIL FOUNDATIONS REFER TO KS-318

## EARTHING SYSTEM BOM : 730028

MATERIAL	QTY	S.I. NO.
70 mm <sup>2</sup> BARE COPPER CONDUCTOR	55 m	102311
EARTH ROD 1800 mm	12	155010
EARTH ROD COUPLING	6	155145
CRIMP - CONDUCTOR TO COND.	18	155136
CRIMP - CONDUCTOR TO ROD	6	155134
120 mm <sup>2</sup> INSULATED CONDUCTOR	5 m	94433
CRIMP LUG FOR 120 mm <sup>2</sup> CONDUCTOR	2	141371

ALTERNATIONS	BOM TABLE ADDED	<p><b>TasNetworks</b></p> <p>DIMENSIONS ARE IN MILLIMETRES. UNLESS OTHERWISE STATED.</p>	<p><b>TasNetworks PTY. LTD.</b></p> <p>ABN: 24 167 357 299</p>		<p>© COPYRIGHT - TASNETWORKS PTY. LTD.</p> <p>NO PART OF THIS DRAWING MAY BE REPRODUCED, STORED IN A RETRIEVAL SYSTEM IN ANY FORM, OR TRANSMITTED BY ANY MEANS WITHOUT PRIOR PERMISSION OF TASNETWORKS.</p>	
	DESIGNED BY		DATE	TITLE	SCALES	
	DRAWN BY		DATE	<p>KIOSK SUBSTATION</p> <p>EARTH GRID AND FITTINGS</p> <p>TYREE 1500/2000 kVA AND SCHNEIDER 4/15 KIOSKS</p>	<p>NTS</p>	
	CHECKED BY		DATE			
APPROVED	DATE	KS-311	REVISION			